

FOR LEASE

1,100 SF - 4,360 SF  
RETAIL / OFFICE

1323-1325 E. 11 MILE RD  
ROYAL OAK, MI



**AVAILABLE:**

1,100 SF to 4,360 SF

**USES:**

Retail, Office

**LEASE RATE:**

\$16.50 / SF / YR, NNN

**JOIN TENANTS:**

Domino's Pizza and Beauty Spa

**LOCATION:**

On east 11 Mile Rd less than 1 Mile from downtown Royal Oak. Easy access to I-75 & I-696.

**SUMMARY:**

Prime corner retail space near Main St/Downtown Royal Oak. Expansive storefront window line and attractive brick facade. Excellent visibility on busy 11 Mile Rd. Sidewalk and rear entrances. Onsite parking.

**FORWARD COMMERCIAL GROUP**

6785 TELEGRAPH RD, SUITE 250  
BLOOMFIELD HILLS, MI 48301  
[www.forwardcommercial.com](http://www.forwardcommercial.com)

**Emil Cherkasov**

Principal Broker  
248.662.5066 Office  
[emil@forwardcommercial.com](mailto:emil@forwardcommercial.com)



# OVERVIEW

1323-1325 E. 11 MILE RD

1,100 SF - 4,360 SF

RETAIL / OFFICE

DEMOGRAPHICS	1 MILE	3 MILE	5 MILE
POPULATION	19,182	140,880	345,654
HOUSEHOLDS	9,299	63,020	147,356
MEDIAN HOME VALUE	\$231,466	\$188,953	\$166,695

## PROPERTY HIGHLIGHTS

- Excellent visibility
- Great window line
- Attractive, newer brick facade
- Onsite parking

## PROPERTY SUMMARY

- \$16.50/SF/YR/NNN
- Close proximity to I-75 and I-696
- Rear double-door(s) for loading/unloading
- Sidewalk entry door(s)



**FORWARD COMMERCIAL GROUP**  
6785 TELEGRAPH RD, SUITE 250  
BLOOMFIELD HILLS, MI 48301  
[www.forwardcommercial.com](http://www.forwardcommercial.com)

**Emil Cherkasov**  
Principal Broker  
248.662.5066 Office  
[emil@forwardcommercial.com](mailto:emil@forwardcommercial.com)



# PROPERTY PHOTOS

1323-1325 E. 11 MILE RD

1,100 SF - 4,360 SF

RETAIL / OFFICE



**FORWARD COMMERCIAL GROUP**  
6785 TELEGRAPH RD, SUITE 250  
BLOOMFIELD HILLS, MI 48301  
[www.forwardcommercial.com](http://www.forwardcommercial.com)

**Emil Cherkasov**  
Principal Broker  
248.662.5066 Office  
[emil@forwardcommercial.com](mailto:emil@forwardcommercial.com)

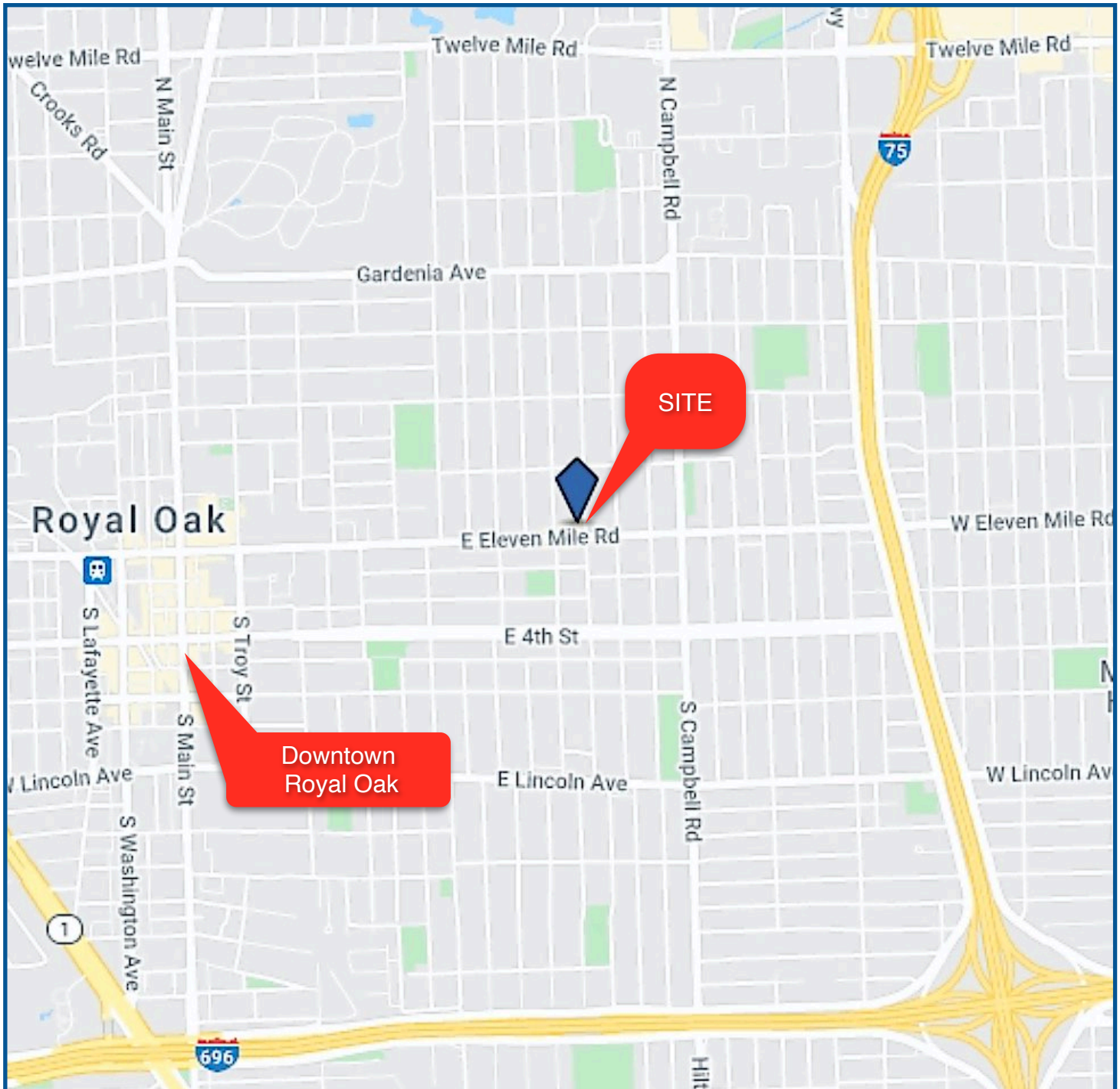


# STREET MAP

1323-1325 E. 11 MILE RD

1,100 SF - 4,360 SF

RETAIL / OFFICE



**FORWARD COMMERCIAL GROUP**  
6785 TELEGRAPH RD, SUITE 250  
BLOOMFIELD HILLS, MI 48301  
[www.forwardcommercial.com](http://www.forwardcommercial.com)

**Emil Cherkasov**  
Principal Broker  
248.662.5066 Office  
[emil@forwardcommercial.com](mailto:emil@forwardcommercial.com)

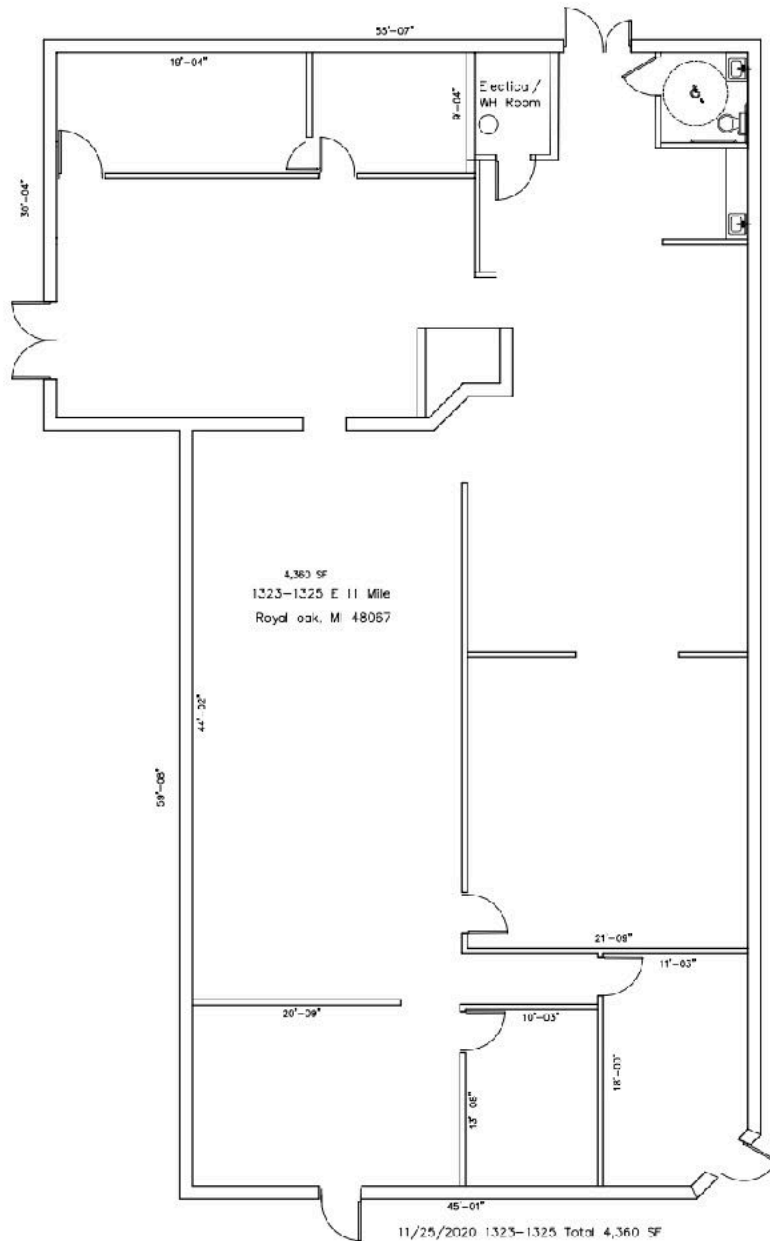


# FLOOR PLAN

1323-1325 E. 11 MILE RD

1,100 SF - 4,360 SF

RETAIL / OFFICE



**FORWARD COMMERCIAL GROUP**  
6785 TELEGRAPH RD, SUITE 250  
BLOOMFIELD HILLS, MI 48301  
[www.forwardcommercial.com](http://www.forwardcommercial.com)

**Emil Cherkasov**  
Principal Broker  
248.662.5066 Office  
[emil@forwardcommercial.com](mailto:emil@forwardcommercial.com)

