

FOR LEASE

3,526 SF  
OFFICE/ MEDICAL

37500 W. 7 MILE RD  
LIVONIA, MI



**AVAILABLE:**

3,526 SF

**USES:**

Medical / Office

**LEASE RATE:**

\$18/ SF/ YR, NNN

**JOIN TENANT:**

Apple Crest Dental and Psychology Group

**LOCATION:**

Just West of Newburgh Rd. Just East of I-275.

**SUMMARY:**

Brand new two story office/medical building. Centrally located in Livonia with easy access via I-275. Ample parking. Great visibility and exposure. Lots of windows providing natural light and beautiful landscaping w/ pond providing a great view. Monument signage available.

**FORWARD COMMERCIAL GROUP**  
6785 TELEGRAPH RD, SUITE 250  
BLOOMFIELD HILLS, MI 48301  
[www.forwardcommercial.com](http://www.forwardcommercial.com)

**Emil Cherkasov**  
Principal Broker  
248.662.5066 Office  
[emil@forwardcommercial.com](mailto:emil@forwardcommercial.com)



# OVERVIEW

37500 W. 7 MILE RD  
3,526 SF  
OFFICE/ MEDICAL

DEMOGRAPHICS	1 MILE	3 MILE	5 MILE
POPULATION	4,599	76,734	192,845
HOUSEHOLDS	2,000	32,362	81,251
MEDIAN HOME VALUE	\$288,133	\$255,438	\$244,189

## PROPERTY HIGHLIGHTS

- Easy access via I-275
- Lots of windows
- Signage rights available
- 43 parking spaces

## PROPERTY SUMMARY

- Price: \$18/ SF/ YR, NNN
- Year Built: 2010
- Lot Size: 1 Acre
- Building: 10,568 SF



**FORWARD COMMERCIAL GROUP**  
6785 TELEGRAPH RD, SUITE 250  
BLOOMFIELD HILLS, MI 48301  
[www.forwardcommercial.com](http://www.forwardcommercial.com)

**Emil Cherkasov**  
Principal Broker  
248.662.5066 Office  
[emil@forwardcommercial.com](mailto:emil@forwardcommercial.com)

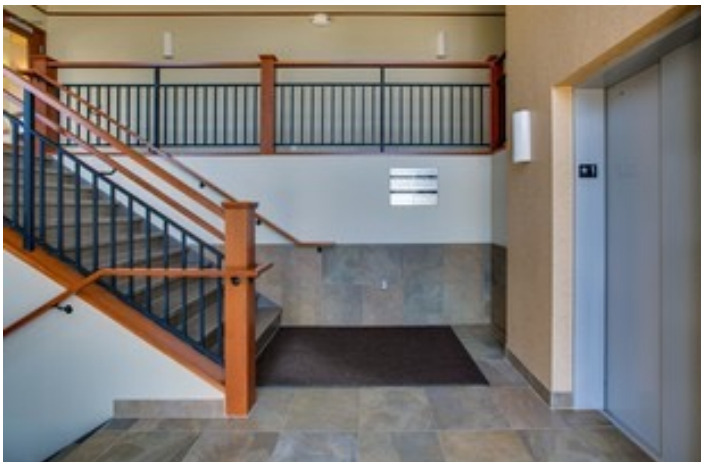


# PROPERTY PHOTOS

37500 W. 7 MILE RD

3,526 SF

OFFICE/ MEDICAL



**FORWARD COMMERCIAL GROUP**  
6785 TELEGRAPH RD, SUITE 250  
BLOOMFIELD HILLS, MI 48301  
[www.forwardcommercial.com](http://www.forwardcommercial.com)

**Emil Cherkasov**  
Principal Broker  
248.662.5066 Office  
[emil@forwardcommercial.com](mailto:emil@forwardcommercial.com)



# AERIAL MAP

37500 W. 7 MILE RD

3,526 SF

OFFICE/ MEDICAL



**FORWARD COMMERCIAL GROUP**  
6785 TELEGRAPH RD, SUITE 250  
BLOOMFIELD HILLS, MI 48301  
[www.forwardcommercial.com](http://www.forwardcommercial.com)

**Emil Cherkasov**  
Principal Broker  
248.662.5066 Office  
[emil@forwardcommercial.com](mailto:emil@forwardcommercial.com)

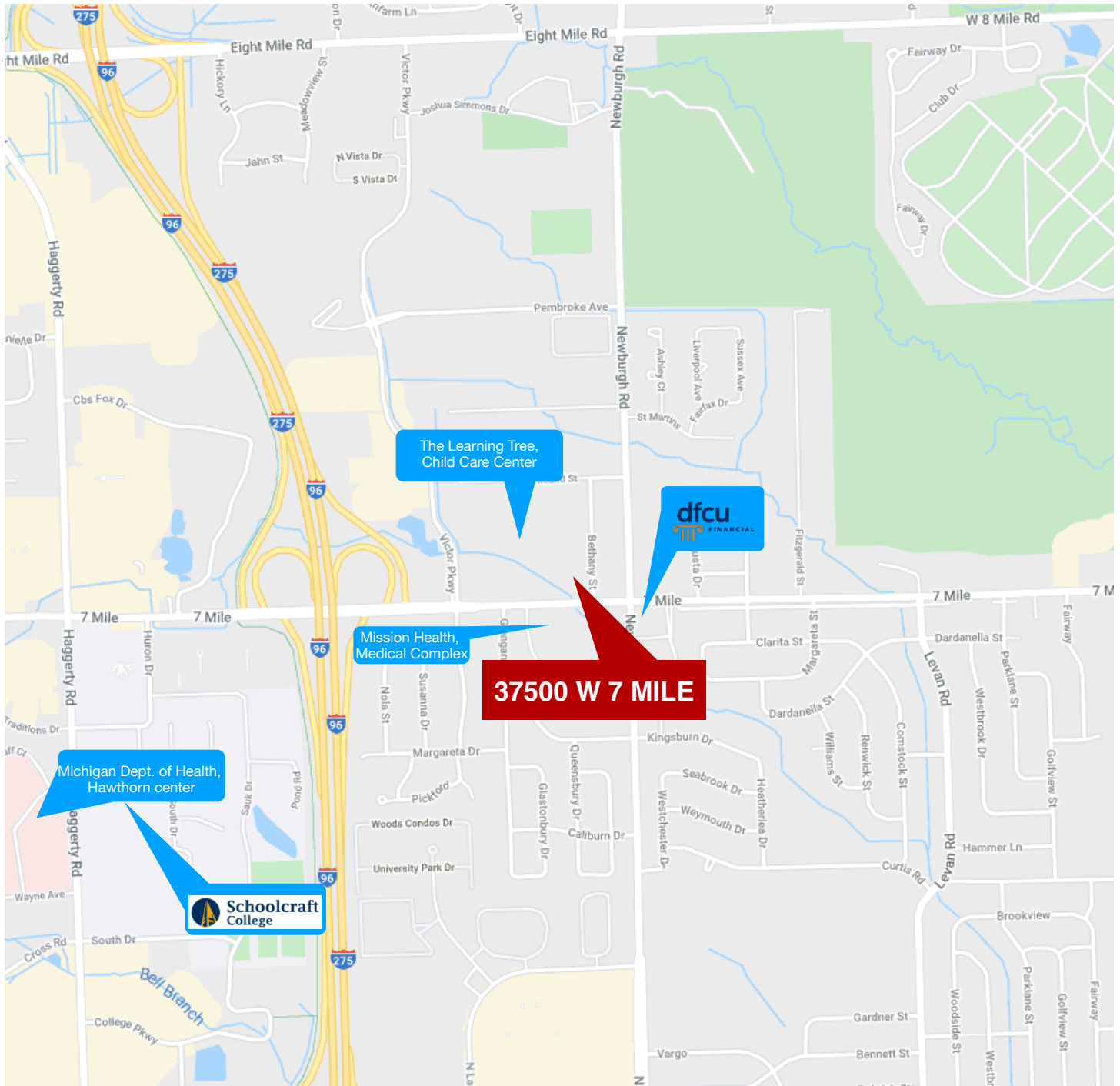


# STREET MAP

37500 W. 7 MILE RD

3,526 SF

OFFICE/ MEDICAL



**FORWARD COMMERCIAL GROUP**  
6785 TELEGRAPH RD, SUITE 250  
BLOOMFIELD HILLS, MI 48301  
[www.forwardcommercial.com](http://www.forwardcommercial.com)

**Emil Cherkasov**  
Principal Broker  
248.662.5066 Office  
[emil@forwardcommercial.com](mailto:emil@forwardcommercial.com)

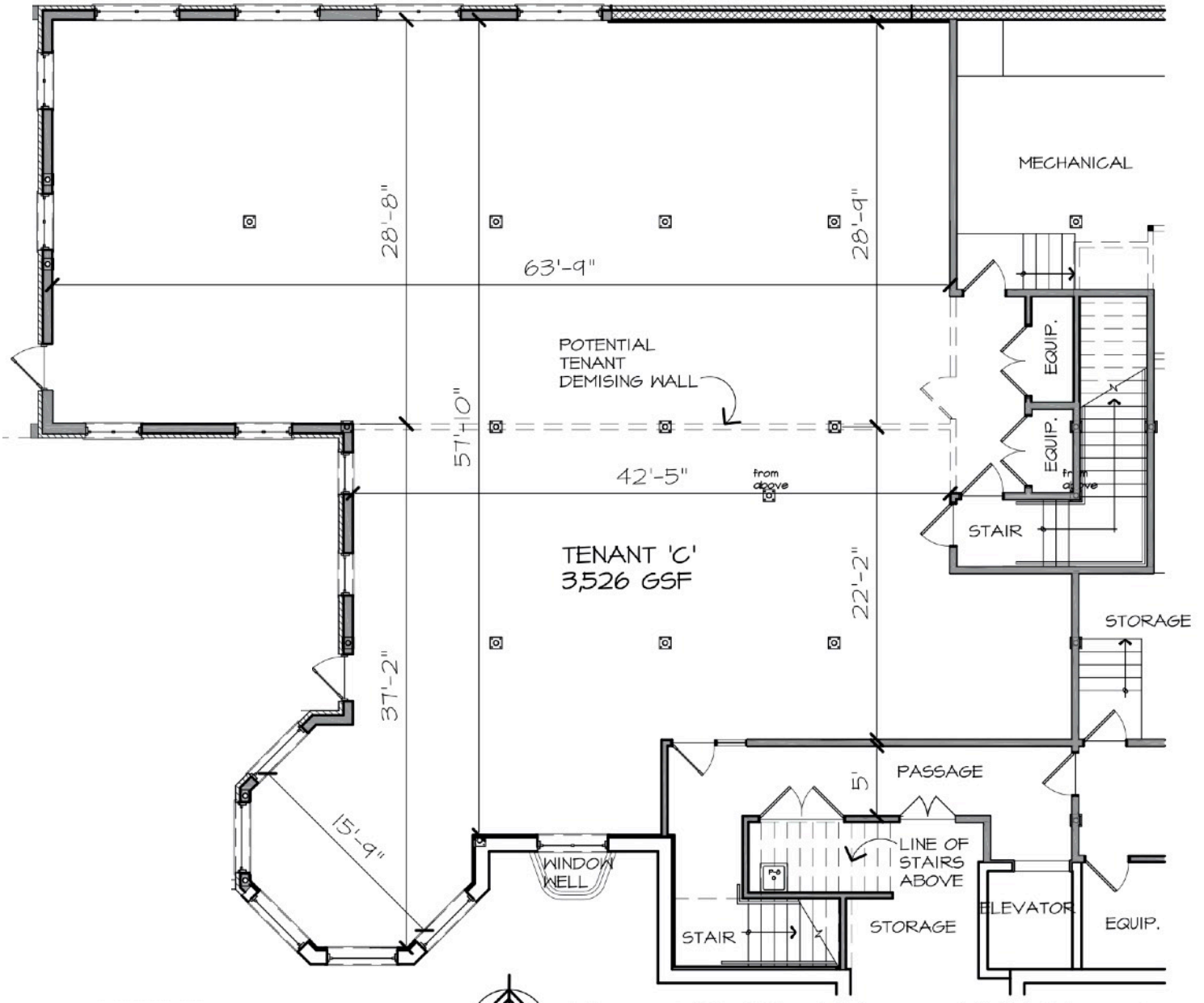


# FLOOR PLAN

37500 W. 7 MILE RD

3,526 SF

OFFICE/ MEDICAL



**FORWARD COMMERCIAL GROUP**  
6785 TELEGRAPH RD, SUITE 250  
BLOOMFIELD HILLS, MI 48301  
[www.forwardcommercial.com](http://www.forwardcommercial.com)

**Emil Cherkasov**  
Principal Broker  
248.662.5066 Office  
[emil@forwardcommercial.com](mailto:emil@forwardcommercial.com)

